

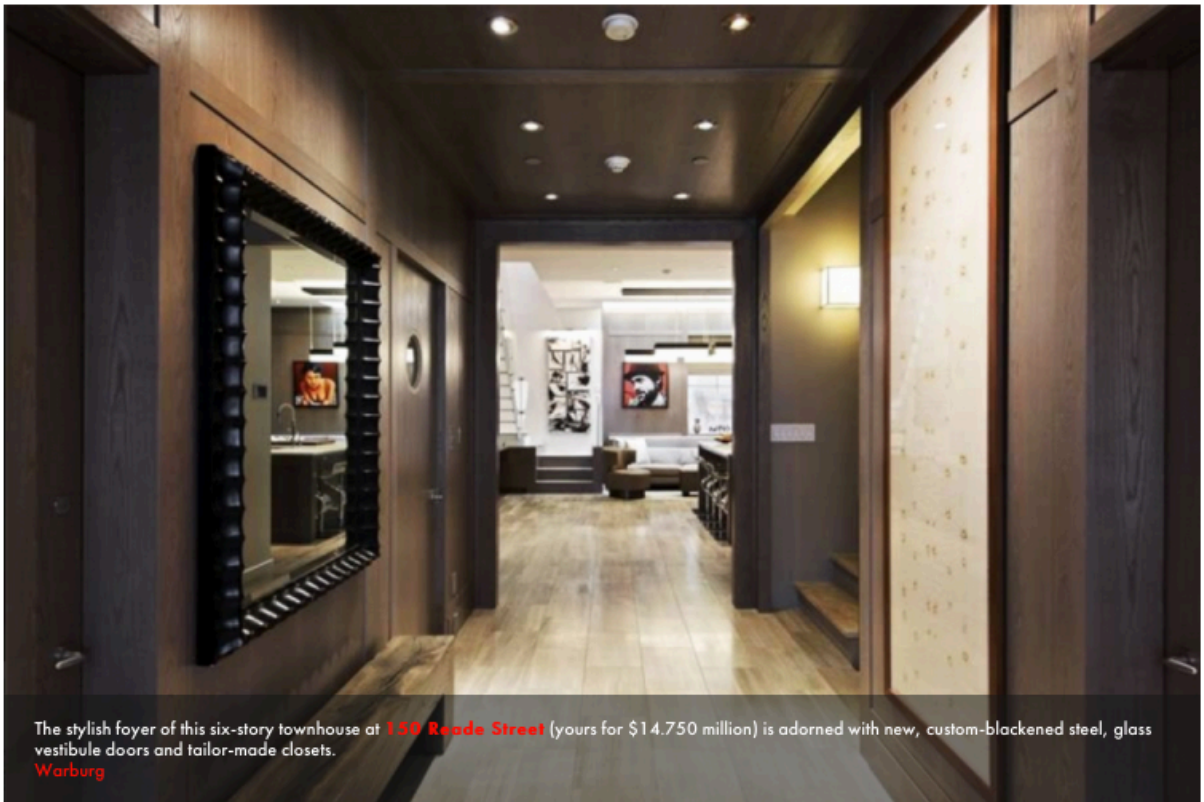


BRICK UNDERGROUND

Real Estate. Real Life. Real New York.

COVET

5 fabulous foyers that guarantee a dramatic entrance



The stylish foyer of this six-story townhouse at [150 Reade Street](#) (yours for \$14.750 million) is adorned with new, custom-blackened steel, glass vestibule doors and tailor-made closets.
[Warburg](#)

APRIL 29, 2016 - 3:59PM

BY JENNIFER LAING

While it's true that a foyer isn't likely at the top of the average person's dream apartment wish list, if ever you've lived in a New York City home in which the front door opened directly into the living room or kitchen, you know that a proper entry (with a closet or two and, perhaps, a place to toss the keys and mail) is not an apartment feature that can be underestimated.



Corcoran

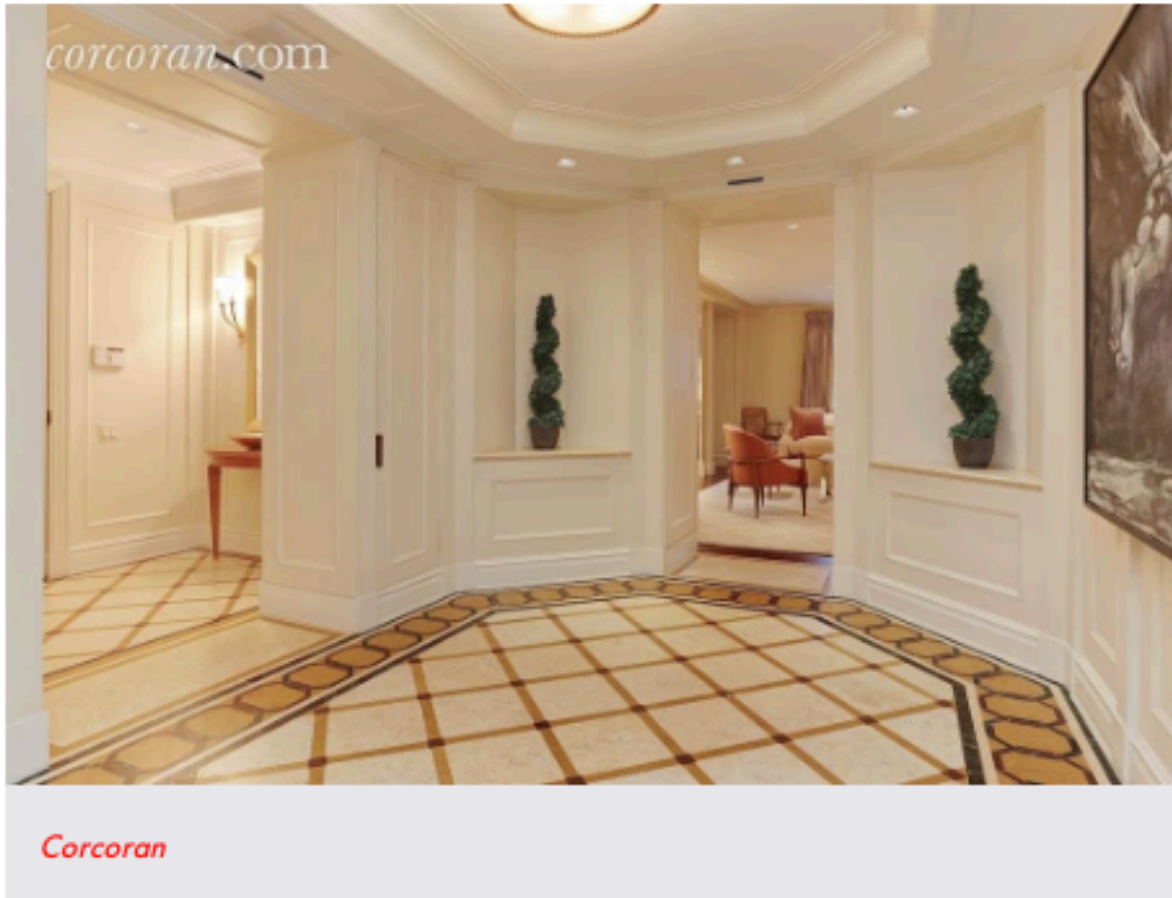
At **20 East End Avenue**, a three bedroom, three and a half bathroom condo (for sale at \$6.575 million) features an entry gallery with Appalachian white oak flooring in a dark walnut stain and herringbone pattern, not to mention custom-paneled entry doors.



Sotheby's

The windowed entry vestibule of this four bedroom penthouse condo at **171 West 57th Street** (on the market for \$18.5 million), leads to a large gallery, a cozy library with a wood burning fireplace and, for those who like to entertain, a dining room that seats thirty.

The windowed entry vestibule of this four bedroom penthouse condo at **171 West 57th Street** (on the market for \$18.5 million), leads to a large gallery, a cozy library with a wood burning fireplace and, for those who like to entertain, a dining room that seats thirty.



At **610 Park Avenue**, a three bedroom, three and a half bathroom condo listed at \$14.950 million, a vestibule leads into an oval-shaped entry gallery and beyond that, an oversized living room with wood burning fireplace and adjacent open library and separate formal dining room complete with a concealed 132 bottle Sub-zero wine cooler.



Corcoran

The entry of this seven bedroom duplex condo at **3 East 95th Street** (priced at \$28.8 million) includes a vestibule and, beyond it, a 14' x 24' reception hall with 20' ceilings that leads into a grand salon and a dining room.